

TEL NEWS

Welcome to TEL News



Health Education England has released the national framework for the delivery of simulation-based education across England. See page 2 for the full story.

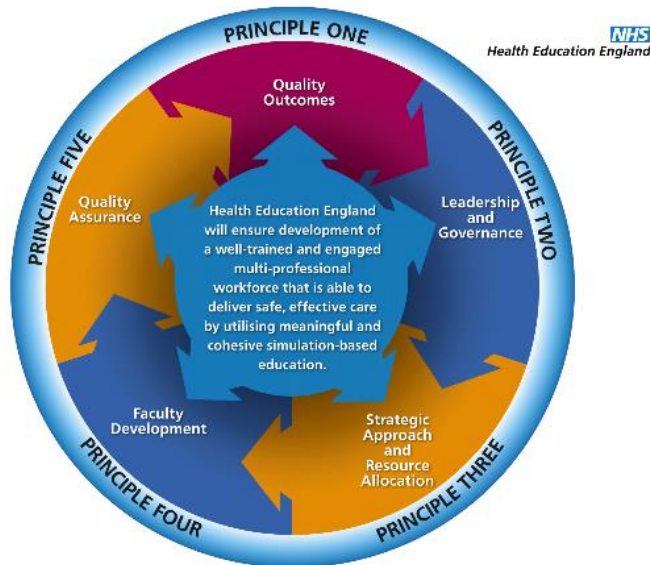
TEL News is your monthly update keeping you up to speed with all that is Technology Enhanced Learning (TEL) in healthcare. If a colleague would like adding to the distribution list please ask them to email tel@hee.nhs.uk providing their contact details.

TEL Programme update

HEE National Simulation-Based Education Framework



We are delighted to announce that Health Education England (HEE) has now released the national framework for the delivery of simulation-based education (SBE) across England.



SBE is an educational tool, or technique, that has a long history of use in healthcare, as well as other industries. Its popularity continues to grow, because it offers an experience that is as close to reality as possible for learners to increase their knowledge, team working abilities and confidence, without any risk of harm to patients. In this way, it can serve to improve both patient safety and patient and learner experience.

HEE recognised that a cohesive approach was necessary to harness the benefits of SBE for learners, encouraging equity of access across

the professions and reflecting the way healthcare is delivered. The framework will therefore support sharing and collaboration, whilst also encouraging innovation, ultimately producing a strategic approach that will uphold the HEE strategic vision and mission.

This framework has been produced through the TEL Programme, with input from leading experts in SBE. With its supporting guidance and advice, it will provide a cohesive approach for first class SBE that is nationally guided, but locally led and delivered.

We would like to take this opportunity to express our thanks to everyone involved in the development and preparation of this important piece of work. Produced in a very collaborative manner, this open engagement has served to give us insight into some of the excellent work that is being done in SBE across the country, and to address those areas that will need additional support moving forward.

We are keen that the framework is shared widely throughout health and social care. Likewise, we would like to encourage engagement and feedback, so that the framework becomes a living tool that is shaped by the needs of patients and learners alike.

The framework can be accessed [here](#), along with a suite of films showcasing SBE in practice, and for more information about this piece of work please email tel@hee.nhs.uk.

Google-Glasses project

A pilot is underway in the north west to look at the efficacy of using Google-glasses to replace, or support, GP trainee consultations. The benefits observed so far are:

- Connected glasses allow the trainer/supervisor to observe the consultation and provide 'live' support
- The trainee can ask the supervisor questions
- The patient is reassured that an experienced doctor is observing.
-



A report will be prepared early in 2019 and a similar co-project is underway at Oxford Brookes University.

Maudsley Simulation re-launch

In further SBE related news, we are also pleased to announce that Maudsley Simulation is holding their re-launch on the 4 December 2018 at The Ortus Centre in Denmark Hill, London. Maudsley Simulation kindly allowed us access to film a perinatal simulated patient scenario, which is part of the suite of films that support the framework. For further information contact:

james.pathan@slam.nhs.uk.



Upcoming SBE conferences

The TEL Programme is pleased to be attending the annual COPDEND conference on Thursday 1 November 2018 in Birmingham.

We will have a presence at the Association for Simulation Practice in Healthcare (ASPiH) annual conference this year in Southport which is taking place from 13 – 15 November at the Southport Theatre and Convention Centre.

These conferences will give us the opportunity to share the developments of the TEL programme and to introduce the SBE framework.



Learning Solution Update

Amy Ashford, Stakeholder Manager for the Learning Solution, has recently joined the Service Team to support and work with our extensive partners and stakeholders. Amy is re-establishing links with people who have been involved with the Learning Solution since its conception. Work is also taking place to identify new stakeholders as the breadth of the Learning Solution unfolds.

With the Service Team established, work has been taking place in various technical areas that are required to begin development. This work includes hosting migration, to provide a more robust and scalable service. The current e-LfH Hub development backlog is underway and once complete the focus will move to the Learning Solution development.

In recent days a survey including a shortlist of potential names for the new Learning Solution has been shared with existing users of the e-LfH Hub, other stakeholders and via social media to generate a final shortlist. This shortlist will be refined for a final name for the new platform to be selected.

If you are interested in finding out more or being part of the Private Beta Group, please contact amy.ashford@hee.nhs.uk.

Meet the TEL team

Following on from September's issue of TEL News, we continue to introduce members of the programme team.

Sukie Shinn

Project Manager – National Simulation-Based Education (SBE) framework



Sukie's role as project manager for the simulation-based education (SBE) framework was created because of her earlier involvement in a review of simulation as part of the Lead Provider Review project for HEE. This role followed on from her previous position as project manager for the HEE London and South East (LaSE) Quality Review.

The links with simulation and quality arose because of Sukie's earlier involvement with the National Clinical Assessment Service (NCAS) as the assessment development manager. In this position, Sukie was responsible for ensuring that the NCAS assessment processes were robust, quality assured, fit for purpose and able to withstand legal challenge. Some of the elements of this quality assurance involved simulation – in particular, setting-up a high fidelity, high impact simulation for anaesthetists with Imperial College and a GP simulated surgery, as part of the observation of practice assessment process.

Claire Heaney Project Manager – TEL Programme

Claire has been a project manager within the TEL team for the past two years. Last year Claire worked with e-Learning for Healthcare colleagues to manage the review and update of the Statutory and Mandatory e-learning training and most recently worked on the Doctors in Training induction programme. This was an innovative project to create the first standardised national induction e-learning programme for doctors in training, which went live at the end of June this year.



HEE's Midlands and East Library and Knowledge Services event

Earlier this month, TEL Programme Lead, Dr Neil Ralph, gave a presentation at the HEE's Midlands and East Library and Knowledge Services event. Neil commented: "It was great to visit this event and to hear more about the important role these colleagues play within the NHS. I had the opportunity to share with them details of what the TEL programme team is working on across digital with e-LfH and the imminent publication of the SBE strategic framework." Neil also talked about the growth of social media and other forums to share knowledge and resources and how the HEE Learning Solution will be a powerful platform to support this for the NHS and beyond.

TEL Southwest seeking research volunteers

Would you or any of your colleagues like to join a new e-learning research project which will also increase your knowledge of current best learning practice?

TEL Southwest are seeking volunteers for a HEE supported study in which different e-learning designs are compared for their efficacy. The subject matter is Train the Trainer Learning Theory, and it has been designed specifically for NHS trainers and e-learning creators. The materials take approximately two hours to complete plus an online pre-test.

If you would like to join or would like more information, please contact Nick.Napper@tst.nhs.uk.



e-LfH update

The HEE e-LfH team is constantly updating existing and launching new e-learning sessions. For the schedule of when new sessions will be launched please click on this link: www.e-lfh.org.uk/planned-programmes.

HEE's e-Learning for Healthcare's Foundation e-Learning Programme: Professional Capability 18



The Foundation e-learning programme has been developed by the Academy of Medical Royal Colleges in partnership with HEE e-LfH and is approved by UKFPO.

An essential part of modern medicine is about recognising the limits of personal competence and when to call for help. The e-learning sessions in Professional Capability 18: Recognises and works within limits of personal competence, explain that protocol and guidelines are there to help you.

Sessions:

- NEW SESSION – Oxygen Therapy
- Competency in Practice
- Senior Advice Who, When and Why?
- Senior Advice: When to Stop for Help
- Explaining Evidence/Guidelines/Protocols to Patients
- Guidelines in Clinical Practice.

Do you need to complete parts of the curriculum on your e-portfolio which you do not cover in day-to-day practice? If so why not try some of our free e-learning mapped directly to the Foundation Professional Capabilities (Training Outcomes) in the 2016 Foundation Curriculum.

You can sign in to the e-learning with your login supplied by e-LfH at the beginning of your foundation training: <https://www.e-lfh.org.uk/programmes/foundation-programme/>

e-ELCA Update



Work on e-ELCA continues in many streams, each providing excellent opportunities for the programme. Below is an update on recent developments and plans for the coming months.

New sessions

A new session has been completed and can be accessed on e-ELCA: 5.24 - Culturally sensitive palliative and end of life care for lesbian, gay, bisexual and transgender (LGBT) people. Work has continued on a new session on the AMBER care bundle. Further new sessions are currently in the very early stages of development.

Session updates

Multiple sessions have been updated recently:

- 4.23a - Recognising the Last Months and Days of Life and Verifying Death
- 4.24 - Managing Death Rattle
- 4.27 - Using Syringe Drivers
- 4.31 - Management of symptoms associated with wounds
- 5.4 - Initiating Conversations About End of Life Care: Long-term Neurological Conditions.

Session updates will continue on a regular basis, and many thanks to those who have contributed to this process. If you would like to get involved in this programme please contact e-ELCA's clinical lead, Rich Kitchen: richard.kitchen@nhs.net.

Learning paths

Learning paths are a useful way of identifying e-ELCA sessions that could be useful for your own learning, as well as for the education of others. e-ELCA has multiple learning paths, grouped into those for specific conditions (such as MND), those for specific groups/professions (such as ambulance personnel) and those designed for specific organisations. Learning paths for those working in care homes, both registered nurses and carers, will be available soon. A medical student learning path is also being further developed and will be discussed at the Association for Palliative Medicine (APM) undergraduate education special interest forum.

Communications

In the coming months we will present at the APM undergraduate education special interest forum and have both a poster and a stand at the Hospice UK conference. Please come and find us!

Smoking in Pregnancy update

Supporting a Smokefree Pregnancy

e-Learning to support healthcare professionals to provide very brief advice on smoking in pregnancy



The Smoking in Pregnancy e-learning programme, which is aimed at helping members of midwifery teams to deliver Very Brief Advice (VBA) on smoking to their patients, including carbon monoxide (CO) screening was launched earlier this year. The programme includes information on the harms of smoking, the importance of having a brief conversation about smoking and how to integrate this into routine practice. There are also links to further information and resources, and a self-assessment to check learning.

The e-learning programme is available on the e-LfH Hub, the Electronic Staff Record (ESR) and has now been updated to be accessible via AICC links.

For more information about this programme, including details on how to access, please visit: <https://www.e-lfh.org.uk/programmes/smoking-in-pregnancy/>.

Updates made to Statutory and Mandatory e-learning programme



Statutory and Mandatory Training
Designed to meet the learning outcomes in the UK Core Skills Training Framework

HEE e-LfH has re-designed the Statutory and Mandatory Training e-learning sessions and eAssessments to be combined into a single package. This update will enable users to easily access both the knowledge content and e-Assessment in one session

As part of this update to the Statutory and Mandatory Training programme, we have also updated the Data Security Awareness Level 1 session and eAssessment to include General Data Protection Regulations (GDPR) and social care updates.

If you are part way through completing these programmes, please be aware that the previous courses will remain accessible within an archive folder until 31 March 2019; enabling users and local administrators to access historic certificates and report on learning history.

For those organisations currently using our AICC functionality to launch the sessions on their own Learning Management System, please note that the existing separate session links will remain active. New links to the combined sessions are now available.

For more information about the programme which covers a range of topics as well as Data Security Awareness including training on Fire Safety, Infection Prevention and Control and Moving and Handling please visit: <https://www.e-lfh.org.uk/programmes/statutory-and-mandatory-training/>.

If you have any questions about the changes to this programme, please contact [HEE e-LfH](#).

MindEd



Launched in 2014 and funded by Department of Health, the Department for Education and HEE, MindEd offers free, completely open access, online education on over 400 topics regarding the mental health of children and young people and adults.

Written to be suitable for all user groups, including professionals, volunteers, healthcare and non-healthcare workforces and the general public, each session lasts no longer than 30 minutes. Users can decide if they would like to complete topics as a stand-alone experience or sign up and complete a wide range of sessions whilst being able to track their learning and print certificates upon completion.

MindEd's latest addition 'MindEd Learning Disability' is the first set of resources aimed at those working with and supporting adults who live with either a learning disability and/or challenging behaviour. The resources were developed in partnership with The Challenging Behaviour Foundation.

The content is broken down into three further modules containing three sessions each.

- Supporting adults with a learning disability and at risk of behaviours that challenge
- Supporting adults with a learning disability and a mental health condition
- Supporting adults with a learning disability and Autism.

If you would like more information about the MindEd project (minded.org.uk) or would like to learn ways of promoting our resources, contact us at: minded@rcpsych.ac.uk or follow us on Twitter @MindEdUK.

New courses added to Shared Decision Making e-learning programme

Shared Decision Making

An online learning resource to assist healthcare professionals in embedding shared decision-making in everyday practice



HEE e-LfH has worked with the Academy of Medical Royal Colleges (AoMRC) and the Winton Centre for Risk and Evidence Communication at the University of Cambridge to add new content to the Shared Decision Making e-learning programme.

The Shared Decision Making e-learning programme is aimed at healthcare professionals, health improvement personnel and patient engagement representatives to inform and educate them on Shared Decision Making in order to embed it in day to day clinical practice.

Two new courses Communicating Risk - Primary Care and Perioperative Medicine – have been added to the programme alongside the existing courses – Guidance on Shared Decision Making, Dialogues in Shared Decision Making and Talking about What Matters.

The Communicating Risk course has two versions; one for primary care professionals and one for perioperative medicine professionals. Each course is designed to help clinicians develop skills for communicating effectively with patients about the risks and benefits of treatment options. Each course consists of four sessions and will take approximately two hours to complete, with each session taking approximately 30 minutes to complete.

Each version of the course includes examples taken either from primary care or perioperative medicine. It includes self-test questions and video consultation case-studies.

By the end of each course, participants will be able to:

- describe why it is important for clinicians to effectively communicate benefits, harms, trade-offs and uncertainties with patients
- explain the inter-relationship between shared decision making, evidence-based medicine and patient-centred care in the context of communicating benefits and
- list key communication skills needed when talking with patients about evidence
- explain how to effectively communicate statistical information to patients
- outline the role of decision support tools, potential uses and where to locate them.

The Communicating Risk course was originally commissioned by the Australian Commission on Safety and Quality in Health Care and has been licensed to the AoMRC as part of Choosing Wisely UK. It has been adapted for the UK by the Winton Centre for Risk and Evidence Communication at the University of Cambridge.

To access the Primary Care course select: <https://portal.e-lfh.org.uk/Component/Details/543267> and to access the Perioperative Medicine course select: <https://portal.e-lfh.org.uk/Component/Details/529401>.

For more information about all courses that are part of the Shared Decision Making programme visit <https://www.e-lfh.org.uk/programmes/shared-decision-making/>.

Suicide Prevention e-learning launched

October sees the launch of a suicide prevention e-learning package, which has been jointly commissioned and produced by HEE and Public Health England.

A multi-agency approach has been taken with its development, with input from Greater Manchester Fire and Rescue Service, Greater Manchester Mental Health NHS Foundation Trust, Greater Manchester Police, Halton Borough Council, Samaritans, service users, University of Manchester and the University of Salford.

The e-learning package is aimed at health and social care staff and provides an initial awareness about suicide, and why people may take their own lives or have suicidal thoughts. Through the use of interactive videos and four storylines, the e-learning aims to help people understand the role they can play in helping prevent suicide. This is achieved by learning how to identify the warning signs and building confidence to know how to speak to someone you may think is having suicidal thoughts. This could be the crucial step to helping someone seek further support and changing their lives.

The e-learning content maps to the Public Health Leadership and Workforce Development, and Mental Health Core Skills and Training frameworks, and provides a knowledge bank with links to a host of additional support services.

The e-learning package was launched on 10 October 2018 to coincide with World Mental Health Day. It will be available in a number of formats to make it accessible to as wide an audience as possible.

The package will ultimately be available nationally via the [e-LfH Hub](#) and ESR. To access the package now, please contact the North eLearning Support Service: yas.elearningsupport@nhs.net, stating which version of the package you would like to access.

Update to Breast Imaging Sessions

Early diagnosis of breast cancer maximises the chances of survival so the availability of tools and training to support early cancer detection is vital¹. In response to this, the 12 breast imaging e-learning sessions, which are part of the Image Interpretation programme, will be updated this year.

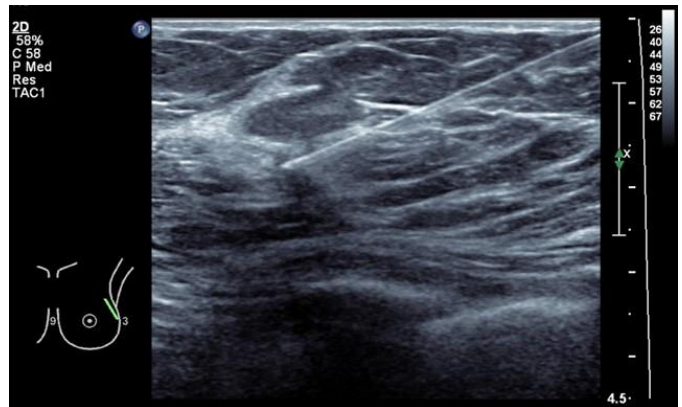
¹ Taroni P, Gordebecke P, Dalla Mora A et al. A multimodal system for the diagnosis of breast cancer: the SOLUS project. Diagnostic Imaging Europe. May/June 2018.

The content, first published in 2014, has been used by over 2500 professionals including radiographers, nurses, students, doctors and allied health professionals. The average content rating by users is 4.3 out of 5.

Dr Sally Athey, Consultant Radiologist, South Tyneside and Gateshead Hospitals NHS Foundation Trust, will conduct the updates. Each session will be checked for policy, procedural and technological changes, and updated accordingly.

The breast imaging module includes the following sessions:

1. Introduction
2. History
3. Breast Assessment - Screening and Symptomatic
4. General Anatomy and Physiology
5. Quality Assurance and Quality Control
6. Biopsy
7. Benign Calcifications
8. Malignant Calcifications
9. Benign Masse
10. Malignant Masses
11. Axilla
12. Self-Assessment.



The Image Interpretation Breast Imaging e-learning sessions are available free of charge and can be accessed here: <https://portal.e-lfh.org.uk/>.

For more information about anything you have read in this update please email tel@hee.nhs.uk.